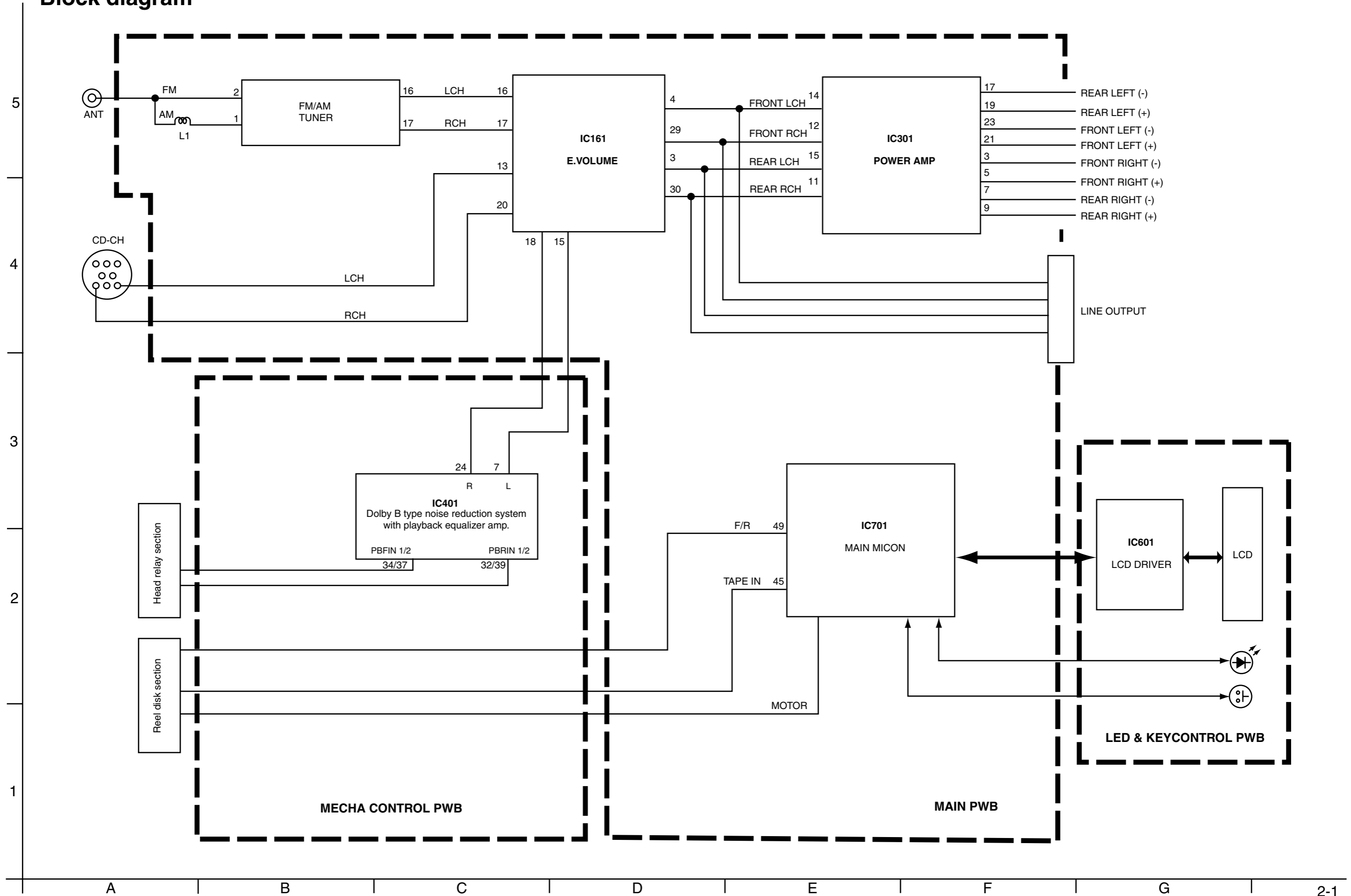
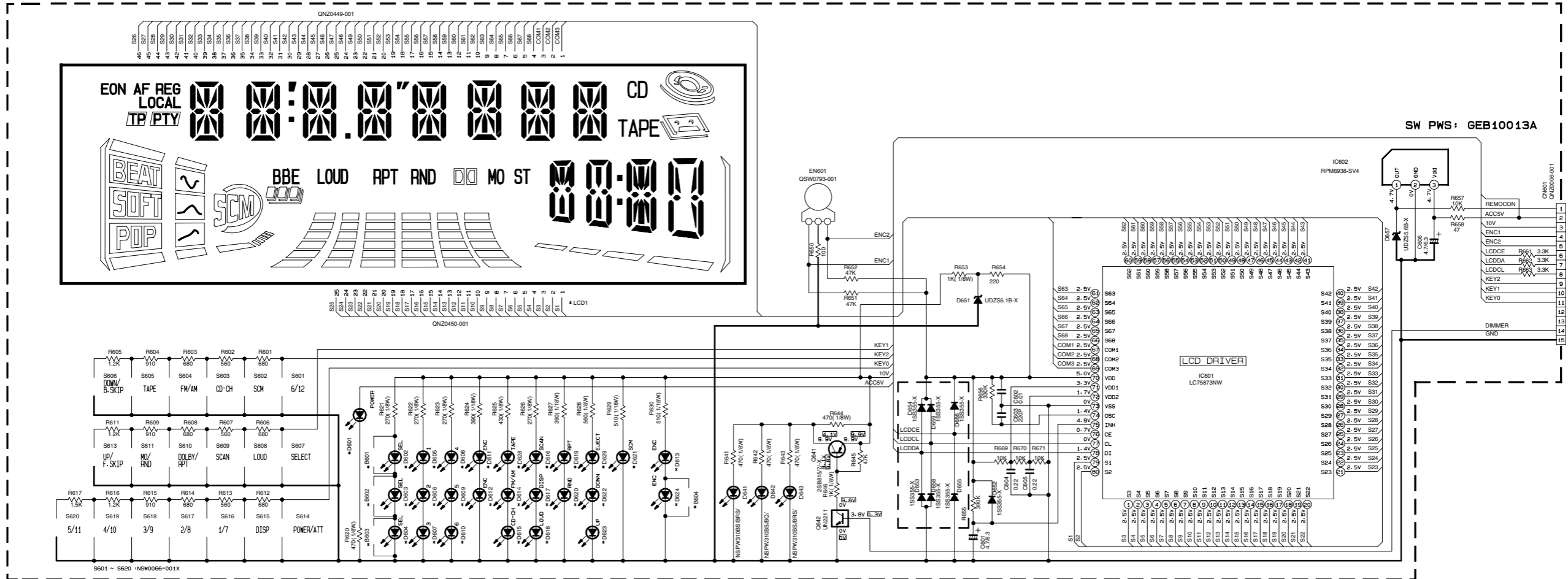


Block diagram



■ LCD driver & Key control section

Reference Name	Part No	KS-FX901U Series	KS-FX801U Series
D601	SM-310L7/AN/-X	USED	USED
D602-D603-D604	SM-310VT/TK/-X	NOT USED	USED
D602-D603-D604	LNJ308681/1-3/-X	USED	NOT USED
D605-D606-D607-D608-D609-D610-D614-D615-D616-D617-D618-D622-D623-D628-D629	LNJ308681/1-3/-X	USED	USED
D619-D620	SM-310YT/TKL/-X	USED	USED
D619-D620	LNJ308681/1-3/-X	NOT USED	NOT USED
D621	SM-3100T/TKL/-X	USED	USED
D611-D612-D613	LNJ308681/1-3/-X	USED	NOT USED
D613-D624	CL-190UB-K-X	NOT USED	USED
B601 B602 B603	NFS463J-DR0X	NOT USED	USED
B604	NFS463J-DR0X	NOT USED	USED
LCD1	QD0163-001	NOT USED	USED
LCD1	QD0164-001	USED	NOT USED



5

4

3

2

1

A

B

C

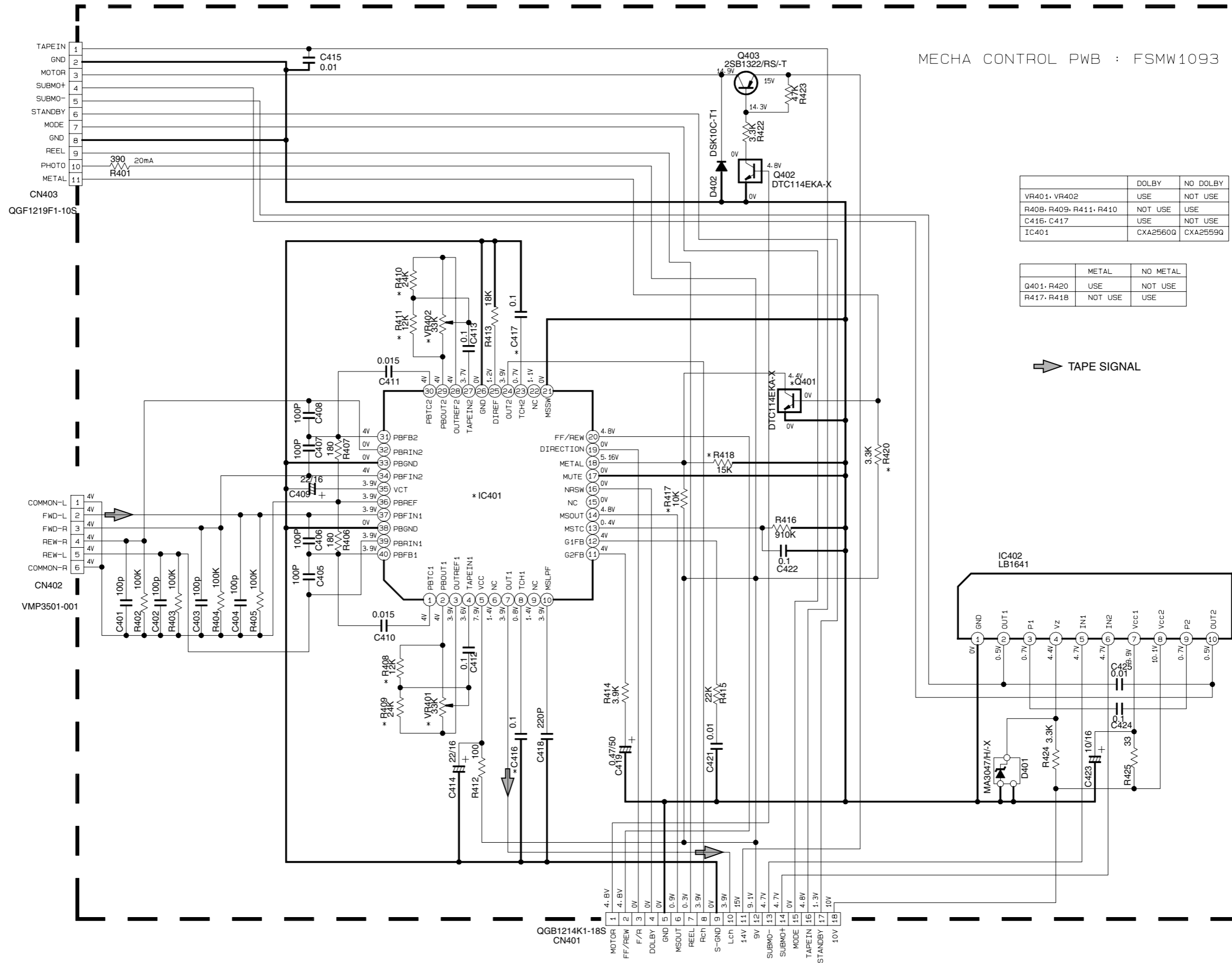
D

E

F

G

Head amp & Mecha control section



MECHA CONTROL PWB : FSMW1093

	DOLBY	NO DOLBY
VR401, VR402	USE	NOT USE
R408, R409, R411, R410	NOT USE	USE
C416, C417	USE	NOT USE
IC401	CXA2560Q	CXA2559Q

	METAL	NO METAL
Q401, R420	USE	NOT USE
R417, R418	NOT USE	USE

➔ TAPE SIGNAL

5

4

3

2

1

A

B

C

2-4

D

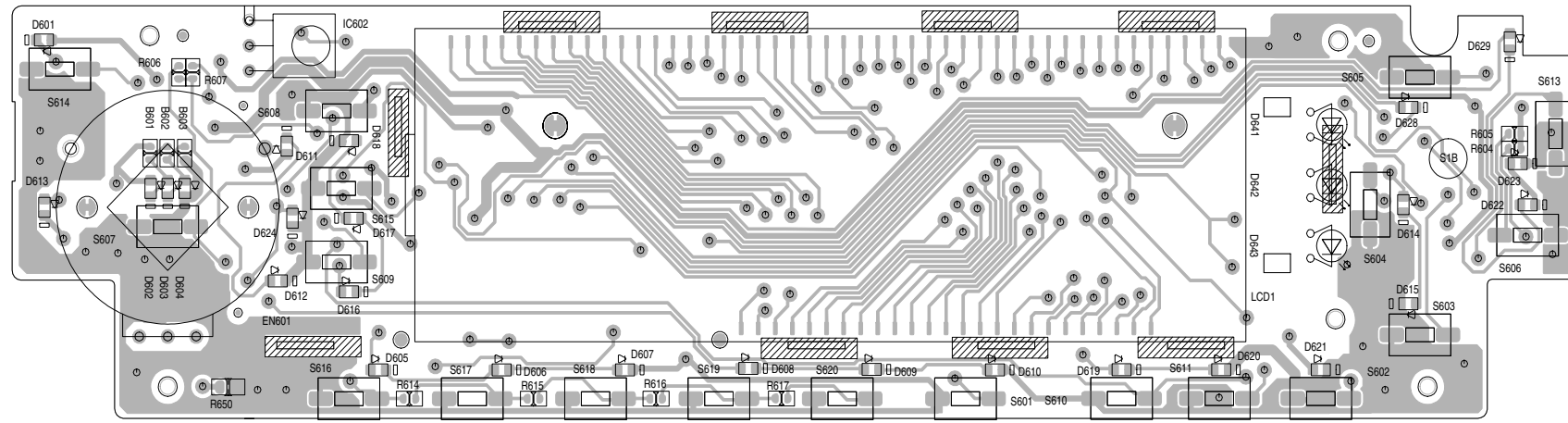
E

F

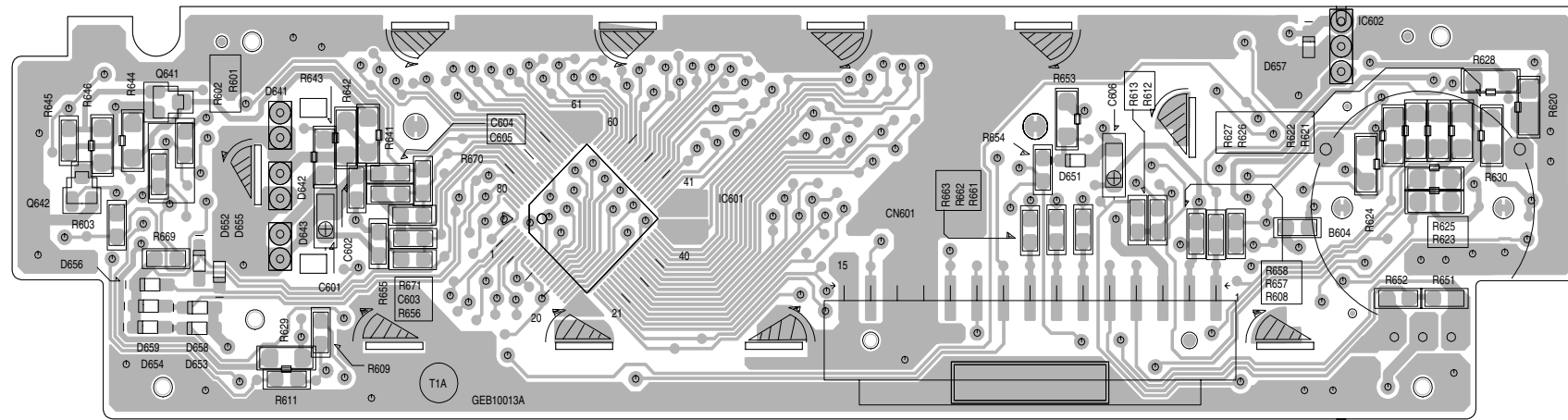
G

H

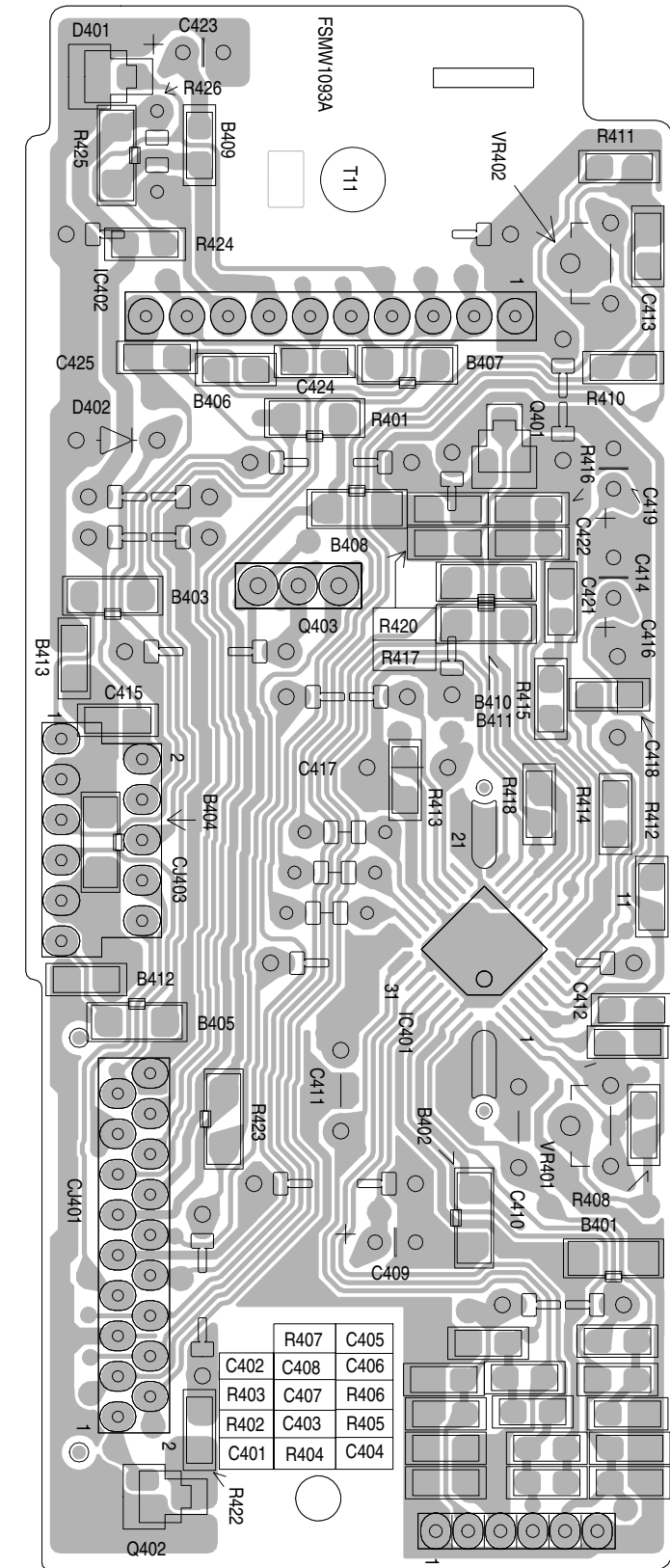
■ Front board (Forward side)



■ Front board (Reverse side)



■ Mecha control board



5

4

3

2

1

A

B

C

2-6

D

E

F

G

H